

## Shotgun Riser Check Valve, Grooved Ends

### FIG. F3322 FIG. F3322B

#### Specifications

- Meet or exceed the requirements of UL 312 and FM 1210 standard.
  - Spring loaded for fast closure.
  - It is used in wet pipe fire protection systems, as well as the pre-action systems where not need a mechanical alarm.
  - Drain plug at the bottom under the inlet end for attaching a drain valve.
  - Excellent flow characteristics.
  - Superior design featuring exceptionally low pressure losses at high flow rates.
  - Rubber disc facing and bronze seat ring.
  - Grooved connections are cut in accordance with AWWA C606 or other standard groove specifications for steel pipe.
- UL 312/ULC listed and FM 1210 approved.

#### Working Pressure and Temperature

- 350 psi rated @ 0°C to 87°C

#### Schematic

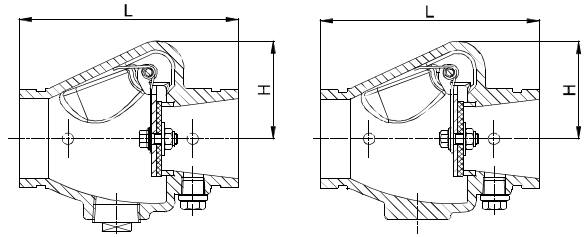


FIG. F3322

FIG. F3322B

#### Corrosion Protection

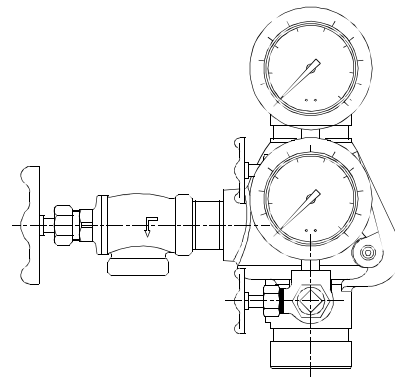
- Fusion bonded coating interior and exterior meet or exceed all applicable of AWWA C550 standard.

#### Options

- Check valves only.
- F3322 with or without Trim.

#### Material Specifications

Part	Material	ASTM Specification
Body	Ductile Iron	A536 Grade 65-45-12
Body Seat Ring	Bronze	B62 C83600
Disc	Stainless Steel	A351 Grade CF8
Disc Facing	Rubber	D2000 EPDM
Spring	Stainless Steel	A276 Grade 302
Hinge Pin	Stainless Steel	A276 Grade 304
Disc Facing Bolt/Nut	Stainless Steel	A276 Grade 304
Angle Drain Valve	Bronze	B148 C95500
3-Way Valves	Bronze	B148 C95500
Nipples	Stainless Steel	A276 Grade 304
Air/Water Gauges	Assembly	



#### Main Dimensions (mm/inch)

Size	1.25	1.5	2	2.5	3	4	6	8
L	160/6.3	160/6.3	170/6.7	183/7.2	198/7.8	218/8.6	270/10.62	325/12.8
H	65/2.5	65/2.5	75/3	80/3.13	90/3.5	102/4	127/5	160/6.3

#### Notes

- 1.25, 1.5 FM/UL pending.
- Designs, materials and specifications shown are subject to change without notice due to the continuous development of our products.